

THINK YOU MIGHT BE PAYING TOO MUCH IN BUSINESS RATES?

THERE IS A REVALUATION IN 2017! BUT YOU HAVE TO APPEAL TO GET THE BENEFIT

businessratesadvice.com is a subsidiary of Walton HPC specialising in business rates appeals in the commercial property market. Our Chartered Surveyors and RICS Registered Valuers have over 20 years' specialist Rating experience.

If you are a landlord or occupier of commercial property then you may well be paying business rates. There is to be a nationwide Revaluation of all commercial property due on **1 April 2017** and you will have a fresh right of appeal from that date.

It is likely you will receive a new Valuation Notice with your new Assessment from September 2016 onwards and you will pay business rates at approximately £0.50 Poundage Rate on the new Assessment.

The Rates Appeal system can be a complex and daunting process. However, we will carry out the Appeal on your behalf on a predominantly success related basis. Furthermore, with the Poundage Rate set to rise, this can also impact on the amount of business rates you pay even if your Rateable Value increases only by a relatively small amount.

Quite simply, you want your Rateable Value to be as low as it can be. There are also a number of Reliefs available which may be beneficial to your business if the Rateable Value can be reduced.

We highlight below some recent successes and savings we have obtained for Clients:



"We saved Enchanted Forest Group over £10,000 per annum "thank you for all your work and persistence".

MARIESSA DEVLIN, MANAGING DIRECTOR,
ENCHANTED FOREST NURSERY GROUP



RV reduced from £54,000 to £28,500;
rates saving over £12k per year.

1 ASHTON ROAD,
GOUROCK

HOTEL



RV reduced by more than 50%.

PORT & HARBOUR HOTEL,
GREENOCK

HOTEL



RV reduced from £84,000 to 60,000.

ENCHANTED FOREST,
ROBROYSTON

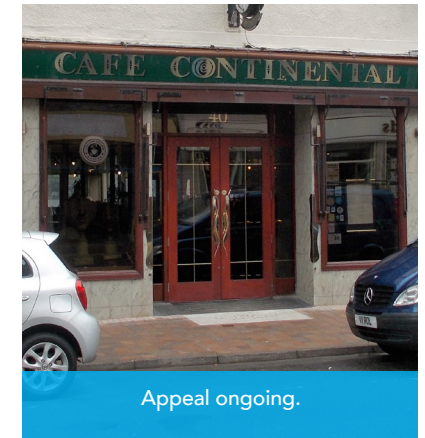
NURSERY



Saved client approx. £3k per year.

KENNETH KEEGAN FUNERAL
DIRECTOR, PAISLEY

FUNERAL PARLOUR



Appeal ongoing.

CAFÉ CONTINENTAL,
GOUROCK

LICENSED PREMISES